



LEAVERITE NEWS

Grand Junction Gem and Mineral Club
2328 Monument Road
Grand Junction, CO 81507



★ PRESIDENTS MESSAGE BY MEL BERSCH ★

I and your newly elected Board members wish you all a very Happy New Year. Please feel free to contact one of the board members or committee members with any constructive ideas for the New Year of 2017

Our next board meeting will be at the club house January 11th at 7:00. The board would like all officers, directors, show committee people and committee chairpersons to attend. Let's start the New Year out with our feet on the ground and reaching for the sky. Your input is important.

January 2017				Volume 34 Number1		
Sunday	Monday	Tuesday	Wednesday	Thursday	Friday	Saturday
1 	2	3	4 12-3 Open Shop	5	6	7 9-12 Open Shop 12-3 Filigree
8	9	10	11 12-3 Open Shop 7:00 Board Meeting	12 Cookie Meeting  6:30pm	13	14 9-12 Open Shop 12-3 Filigree
15	16 	17 12-3 Chain Maille	18 12-3 Open Shop	19	20	21 9-12 Open Shop Faceting 9:30 12-3 Filigree
22	23	24 12-3 Chain Maille	25 12-3 Open Shop	26 Dinner Meeting 6:30pm	27	28 9-12 Open Shop
29	30	31 12-3 Chain Maille	1 12-3 Open Shop	2 	3	4 9-12 Open Shop

Christmas Dinner

Joanna Marini Dindinger

Joanna Marini Dindinger again played for our Annual Christmas Dinner. Joanna has a beautiful full sized harp made by Marini Harps, a company created by her father. <http://www.marinimadeharps.com/>



She played all through dinner and again after the business meeting, warming the room with beautiful Christmas music. A special thanks for sharing the evening with us.



As usual, there was an abundance of wonderful food and great company. The room was elegantly decorated and the two long tables of food was piled high with turkey, ham, potatoes and gravy, all furnished by the club—but lovingly cooked by several club members. Thanks for all the work that went into making this a special evening. In addition, members outdid themselves with special sides and desserts to compliment the meal.



Election of Officers

Mel and Mike will return for another year and Pam says this is her last year so someone needs to start learning the books! A special thanks to Carla Martin and Kay Crawford for serving as co-secretaries last year. Thanks to Tom Erickson who has served as director and will be followed by Teri Drost.

- President:** Mel Bersch,
- Vice president:** Mike Burritt
- Secretaries:** Anita Martinez and Chris Henderson
- Treasurer:** Pam Bersch
- Financial Advisor:** Jim Schultz;
- Directors:** 1 year, Pat Martinez; 2 year, Cindy Teare; 3 Year, Teri Drost





Field Trips

Field Trip Rules for 2017

There are 23 trips in the planning stages!

The following rules will work for best everyone involved.

Let's have fun this next year!!!

1. You MUST sign up for field trips on Meetup.com or notify the field trip leader to place you on the list. If you do not have a computer, use your cell phone.
2. Attendees MUST be members of GJGMC or first time guests of members.
3. You Must have a release of liability on file.
4. There will be a limit of 15 attendees on each field trip.
5. If your plans change, notify the field trip leader so someone can take your place.
6. If the field trip has any changes or is cancelled, you will be notified.

Cookie Night--January 12 Program

Eric E. Eckberg

Geologist

Minerals, AML, or Paleo

Eric Eckberg is a geologist from the Grand Junction BLM office. He is also a rock hound with a background that includes about 10 years in the private sector, doing mineral exploration for gold, silver, copper, zinc, and other metals. He has worked in a number of mines in the United States and has done exploration in Chile, Mexico, Wyoming, Nevada, Colorado, and other places.

Learn more about BLM access, rules for off-road and ATV use, casual use and rock hounding on BLM lands from a mining law and regulations perspective. Eric will bring some BLM maps (1:100,000 scale) of Mesa, Garfield and Montrose Counties that can be purchased for \$4 each. Don't miss this informative meeting!

Facetors' Meeting

November 19, 2016

We had a very small group at the meeting: Howard Whipple, Ralph Stuart, Casey Trump, Jim Smith, Dale Breckenridge and Connie Duncan. Kathy and Thom Erickson came a little later.

Our project stone, "Gamma Brilliant" was cut by: Howard, Yellow CZ, Dale - Amethyst and Connie - Purple Laser Gem. Dale also had the "Moonglow" design in blue/green Spinel. The "Gamma Brilliant" was the most brilliant cut in CZ.

Doc Stuarts' friend from Canada, Dick Strata, sent some nice Herkimer Diamonds to the group.

Howard will bring the diagram "Fan CZ" to the December meeting for us to discuss. He stated that CZ needs to be final polished on a Batt lap after polishing with a ceramic lap.

Dale gave a program on "Critical Angles-How Important?". The program was very interesting and gave us a better understanding of the reasons for using the critical angles for most materials. Their importance depends on the type of material being cut, size of the table on the stone and the particular design being cut. The upshot being--it's best to use the established critical angles for the material being cut. The question was raised as to critical angles on Lead Glass, Laser Gem and Jewelite. Use Quartz angles on Lead Glass and Laser Gem and Corundum angles for Jewelite. Our next meeting will be December 17th and the project if "Squahex" designed by Dale.

Facetors' Meeting

December 17, 2016

Members attending: Kathy Erickson, Jim Smith, Dale Breckenridge Mike Ryan, Howard Whipple, Ralph Stuart, Casey Trump and Connie Duncan.

Our project, "SquaHex" was cut by: Dale - Yellow Zircon, Connie - Clear Corundum. Dale also had a past project in Green Jewelite.

Howard had his "Fan CZ" cut in Gold CZ, very beautiful, which may be considered for a competition stone in 2018. This design has 105 facets, but Howard says it is not difficult to cut. Howard also had the Volitini design, "Nymphaea" cut in Blue Jewelite which he changed the crown angles on, also very beautiful. Dale said that Jewelites' R. I. can vary depending upon the color of the material.

Howard also had the "Heidelberg Brilliant" to show, it worked well after he contacted Dale and Dale simplified the cutting order of the diagram. Connie will email a copy of this design to everyone.

Dale stated that a lower crown tends to give better light return from your stone. There was much discussion about changing angles to meet requirements for the material being cut, tangent ratioing the diagram to get the best performance.

Our next meeting is January 21st, our project is: "Flower of the Mines".



Classes

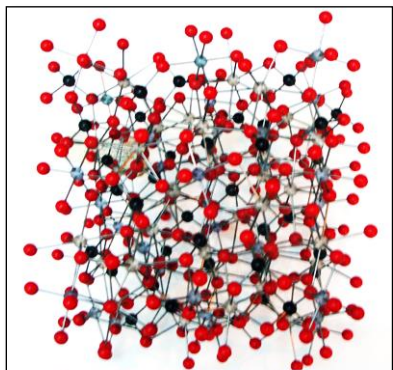
Sign up sheets are found on the front table during meetings. Please sign up for classes you are interested in taking. The teachers will contact you as to when the class will begin, dates and times it will meet and materials necessary for the class.

Brag Rocks

Great finds from recent field trips.



January Gemstones



Molecular Model of Garnet
CC BY-SA 2.5

Garnets are a group of silicate minerals that have been used since the Bronze Age as gemstones and abrasives. All species of garnets possess similar physical properties and crystal forms, but differ in chemical composition. The different species are pyrope, almandine, spessartine, grossular (varieties of which are hessonite or cinnamon-stone and tsavorite), uvarovite and andradite.

Garnet species are found in many colors including red, orange, yellow, green, purple, brown, blue, black, pink, and colorless, with reddish shades most common. Garnet species' light transmission properties can range from the gemstone-quality transparent specimens to the opaque varieties used for industrial purposes as abrasives. The mineral's luster is categorized as vitreous (glass-like) or resinous (amber-like). Because the chemical composition of garnet varies, the atomic bonds in some species are stronger than in others. As a result, this mineral group shows a range of hardness on the Mohs scale of about 6.5 to 7.5. The harder species like almandine are often used for abrasive purposes.

From Wikipedia

History in the News

Utah's Henry Mountains

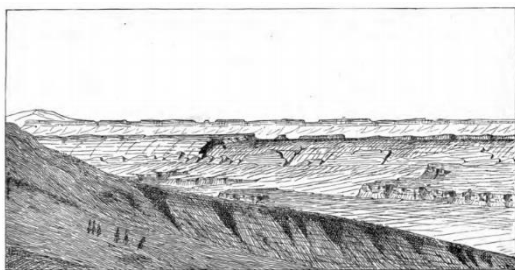
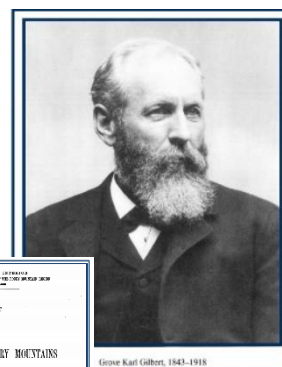


FIG. 4.—Waterpocket Flats, as seen from the south end of Mount Ellen.

Go back in time with this volume and experience the thrill of discovering brand new geologic concepts! Accompany one of America's greatest



Grove Karl Gilbert, 1843-1935

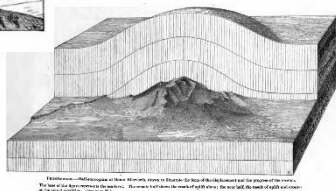
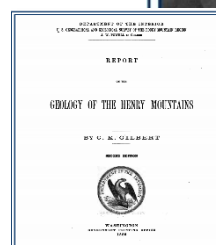


FIG. 1.—Diagram illustrating the concept of a laccolith. The central mass of igneous rock has forced the surrounding strata upward, forming a dome. The strata are shown as layers of rock, and the igneous mass is shown as a dark, irregular shape in the center.



geologists, Grove Karl Gilbert, through these field notes of his trip into Utah's Henry Mountains in 1875-1876. Here is an exciting, firsthand record of this historic field trip during which Gilbert introduced the concept of laccoliths and demonstrated clearly that intrusive igneous masses can deform the rocks into which they intrude. Gilbert's notes became the guide for Charles Hunt's many seasons of work in the same area 60 years later. Now Hunt shares Gilbert's notes and maps with us, adding asides and clarifications of his own to create a fascinating combination of geologic history and frontier Americana. For young geologists, Gilbert's precise and elegant field sketches and descriptions provide a virtual course book in field operations, techniques, and geologic sketching. An enjoyable book for all, and an essential companion for anyone exploring this scenic section of the great American West on their own.

Geology of the Henry Mountains, Utah, as Recorded in the Notebooks of G.K. Gilbert, 1875-76, by Grove Karl Gilbert, Charles Butler Hunt · Geological Society of America · Hardback · 229 pages · ISBN 0813711673 for \$7.99.

Also, see the original notebook at http://www.geos.ed.ac.uk/homes/s0451705/gilbert_1877_intro.pdf

Grand Junction Gem and Mineral Club

Officers

President	Mel Bersch	242-3134
Vice President	Mike Burritt	260-3897
Co-Secretary	Anita Martinez	434-9270
Co-Secretary	Chris Henderson	719-244-3192
Treasurer	Pam Bersch	242-3134

Directors

Pat Martinez	434-9270
Cindy Teare	462-6806
Teri Drost	256-0983
Jim Schultz	242-0428
Betty Jo (BJ Brown)	241-3051

Committee Chairpersons

Audit	Kathy Erickson	623-2522
Building/Ground	Sylvester Spaeth	846-5716
Compliance	Jim Schultz	242-0428
Correspondence	Bambi Harmon	245-1414
Decorating	Linda Dunham	620-255-2856
Display Cases	Val Meduros	773-4244
	Carmen Bruno	773-4247
Education	Cindy Teare	462-6806
Field Trips	Wayne Sims	314-2970
Funding/Constr.	Mike Cosby	589-0687
	Virdie Savage	243-1030
Historian	Connie Lynch	361-2123
Hospitality	Judy Nason	250-9128
Inventory		

Leaverite Editor

Librarian

Meet-Up

Membership/Badges

Nominating

Publicity

Scholarships

Shop Foreman

Show

Supplies

Vests

Website

Lorrie Wallace	250-1122
JoAnn Whalen	424-2007
Evita Schultz	242-0428
Jim Schultz	242-0428
Dave McCollough	523-5443
Missy Palmer	639-2615
Teri Drost	256-0983
Wayne McMacken	208-2534
Bill Hood	241-8020
Thom Ericson	623-2522
Scott Pugsley	972-953-7735
Wayne McMacken	208-2534
Linda Sims	314-2970
Linda Sims	314-2970
John Mayerik	243-8589

Duties of General Membership

- Pot Luck: Bring a dish to share with several members
- Cookie Meeting: Bring 3 dozen cookies for meeting
- Cleaning: Clean before each Pot Luck Meeting
- Hospitality: Be early, greet and give out prize tickets.
- Show: Set up, take down and work during.

Sign Up for A Duty



Safety-All members
at all times.

Board Meeting

The board will meet at Mel Bersch's house, 248 Little Park Road, at 7:00 pm on the Wednesday before the 2nd Thursday Cookie Meeting each month. All club members are welcome to attend. Hope to see you there.

Club Information

The Grand Junction Gem & Mineral Club, Inc. is affiliated with the American Federation of Mineralogical Societies, and the Rocky Mountain Federation of Mineralogical Societies. The club is located at 2328 Monument Road Grand Junction, CO. The Club is a nonprofit, 501(c)(3) tax-exempt, educational organization. Our purpose shall be exclusively educational and social: To increase and disseminate knowledge of the earth sciences pertaining to minerals, gems, rocks, artifacts, fossils and similar subjects; To promote and perpetuate knowledge of the lapidary arts; To encourage field trips; To encourage greater public interest and education in gems, fossils and minerals, cooperating with established institutions in such matters. The Grand Junction Gem and Mineral Club meets on the second and fourth Thursday of each month at 6:30 pm in our club building. June, July, and August meetings will be on the fourth Thursday only. November and December meetings will be on the second Thursday only. Our Annual Show is Mother's Day Weekend and is held at Two Rivers Convention Center at 159 Main St, Grand Junction, CO 81501. Classes and workshops are offered throughout the year and are announced in the newsletter.

The Mineral Group

The Mineral Group meets at the Bersch's, 248 Little Park Rd, on the Friday after the 4th Thursday's Club Meeting and is open to all club members and guests. A potluck will be followed by discussion and microscopic images of various minerals. Please bring up to 5 specimens, and/or other minerals you wish to look at for the discussion.

New Members

Welcome to the Grand Junction Gem and Mineral Club. Include your email address when you register to receive newsletters and updates. Check out the website for past newsletters and general information. Order a vest made to your size from Connie Lynch for \$20.00 and a name Tag from Dave McCullough for \$8.00. Be sure to sign up for some classes to learn how to use the machines in our shop so you can participate in open shop.

Dues

Our calendar year is January 1 - December 31. Dues are due by December 31 but must be in by January 30 for names to be included in the Club Directory. Please pay your dues at the meeting or send to: Dave McCollough 3032 Milburn Court Grand Junction, CO 81504; 970-523-5443. Prospective members should attend one general meeting to obtain a membership application. Annual dues will be prorated after July 1st. Adult Member - \$30.00 (18 and over 2nd Adult, same household - \$10.00 Children under 18 years, same household - No Cost

Club Rules and Regulations

The notebook of rules and regulations is available on the front table at all meetings for members to read.

Gem and Mineral Classes

Most classes are 6 weeks. Member's cost \$30.00. Non-member's cost is \$60.00. The cost of the classes is based on 6 weeks and prorated when the class is shorter. Please contact instructors to sign up for classes.

Class	Instructor	Phone	Open Shop
Beading	Tiny Blasdal	858-7975	Shop Chairman: Thom Erickson 623-2522
Chain Making	Cindy Teare	462-6806	Shop Supervisors:
Faceting	Connie Duncan	244-2984	Wednesday: 12-3 Thom Erickson 623-2522
Filigree	Jana Burritt	260-9471	Saturday: 9-12 Scott Pugsley 972-953-7735
Intarsia	Jim Lynch	361-2123	Previous instruction in use of equipment is required
Lapidary	Jim Schultz	242-0428	before using any tools or machines in the shop.
Lapidary	Mike Burritt	260-3897	Sign in each time you use the shop.
Silversmith	JoAnn Piburn	245-1669	Help with the clean-up before leaving.
Silversmith	Wayne McMacken	208-2534	Shop fee is \$5.00/session.
Wire Weaving	JoAnn Piburn	245-1669	Slab saw \$.26 per square inch.
Wire Wrap			Always—Safety First

The Leaverite News

The Leaverite News is your newsletter. Articles, ideas and news should come from the club members. If you are an officer, director, or committee chair person you should plan to submit monthly updates by the 15th of each month. News should be emailed to leaveriteneews@gmail.com or contact Lorrie Wallace (250-1122 or JoAnn Whalen (424-2007, 554 Casa Rio Ct., Grand Junction, CO, 81507. *Leaverite News is published nine months of the year (Sept-May by the Grand Junction Gem and Mineral Club, Inc. Articles printed in this newsletter are the experiences and/or opinions of the individuals submitting them. They do not necessarily reflect the views or opinions of the Grand Junction Gem and Mineral Club, nor of the editors. Articles written without a byline are written by the editor. We are not responsible for authenticity, safety, or reliability of publications. All articles/photos are included in accordance to fair use for research and education. Caution and safety should always be practiced when trying out any new idea, venture or exploration in the field. We request corrections and/or additions to articles.*

Grand Junction Gem and Mineral Website

Our website, www.grandjunctionrockclub.org, has meeting information, Leaverite Newsletter, Classes, Field Trips, & Photo Gallery. Send information to John Mayerik; 243-8589; email Grandjunctionrockclub@gmail.com

Meetup

Meetups are neighbors getting together to learn something, do something, share something. The Club is registered at the Grand Junction Meetup. Go to http://www.meetup.com/cities/us/co/grand_junction/ to register or for information or call Jim Schultz at 242-0428.

Summary of Minutes of the Gem and Mineral Club Board Meetings

Board Meeting December 7, 2016

1. Call meeting to order.
2. Minutes of last meeting
3. New phone line has been run to shop; problem with phone reception fixed.
4. Overhead projector for programs has been installed
5. The Gold Prospectors Club has an interest in being part of our club. Their board members will come to our December meeting. Discussed assets, becoming possible members.
6. Solar posts lights for driveway entrance have been installed.
7. Mike Burritt contacts for advertising in club newsletter—no news.
8. No classes until January.
9. Storage shed 8' x 8'x40', water tight container for \$3500.00 moved to our sight and set up. Vote approved, present to general membership at next meeting.
10. Field Trips do we want to be open to the general public or members and guests only. List of field trips, signup list, guests can go on one field trip but after that need to be a member, Limit each trip to 15 members plus leaders. Voted and passed.
11. Next board meeting will be at the clubhouse January 11th at 7:00 pm. The board would like all officers, directors, show committee people and committee chairpersons to attend. Let's start the New Year out with our feet on the ground and reaching for the sky. Your input important.
12. Adjourned.

General Meeting December 8, 2016

1. Call meeting to order.
2. Welcome members and guests
3. Stand for Pledge of allegiance to flag and blessing on the food.
4. Turn time over to Vice President to introduce entertainment : Joanna Marini Dindinger
5. Thanks to the kitchen help and clubhouse cleaners and all the cooks.
6. Introduction of guests
7. Minutes are posted
8. Treasurer's report posted
9. Correspondence -Fruita show
10. Attendance and job sheets filled out
11. Classes: Cindy Teare
 - a. No classes in December.
 - b. Classes will start in January
12. Building and Maintenance:
 - a. Overhead projector for programs has been installed
 - b. New phone line has been run to shop; problem with phone reception fixed.
 - c. Solar posts lights for driveway entrance have been installed.
13. Storage shed 8' x 8'x40', water tight container for \$3500.00 moved to our sight and set up. Vote approved.
14. Election vote for new board of directors unanimous.
15. Show and Tell
16. Merry Christmas and Happy , fruitful New Year!
17. Adjourned.

Merry Christmas and Happy New Year!

Let's start the New Year out with our feet on the ground
and reaching for the sky. Your input important.



Merry
Christmas









